

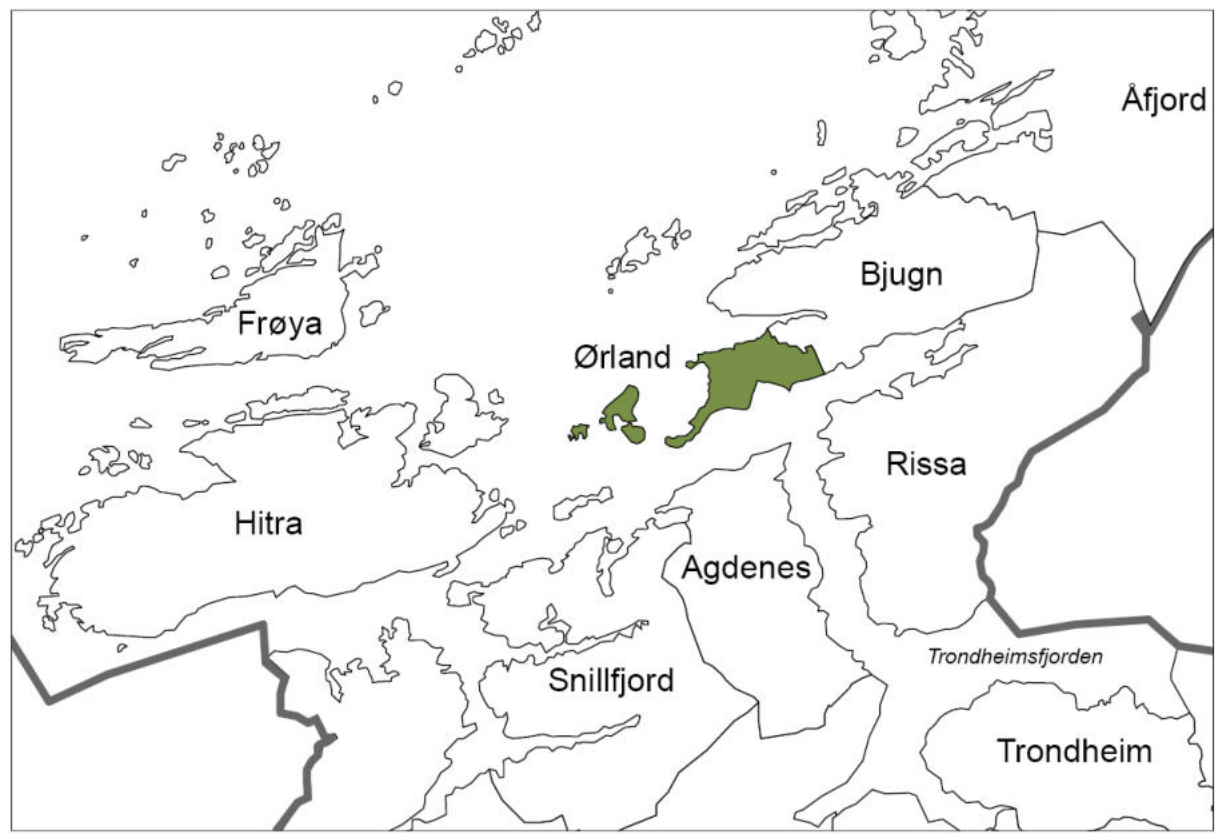
The Austrått Landscape

How to utilize cultural landscape in tourism

Norwegian University of Life Sciences (NMBU)

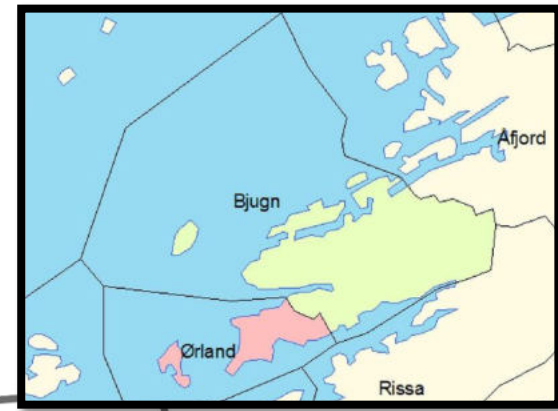
Department of Landscape Architecture

Professor Annegreth Dietze-Schirdewahn



Austrått landscape 12 km²

East in Ørland municipality



ØRLAND KOMMUNE

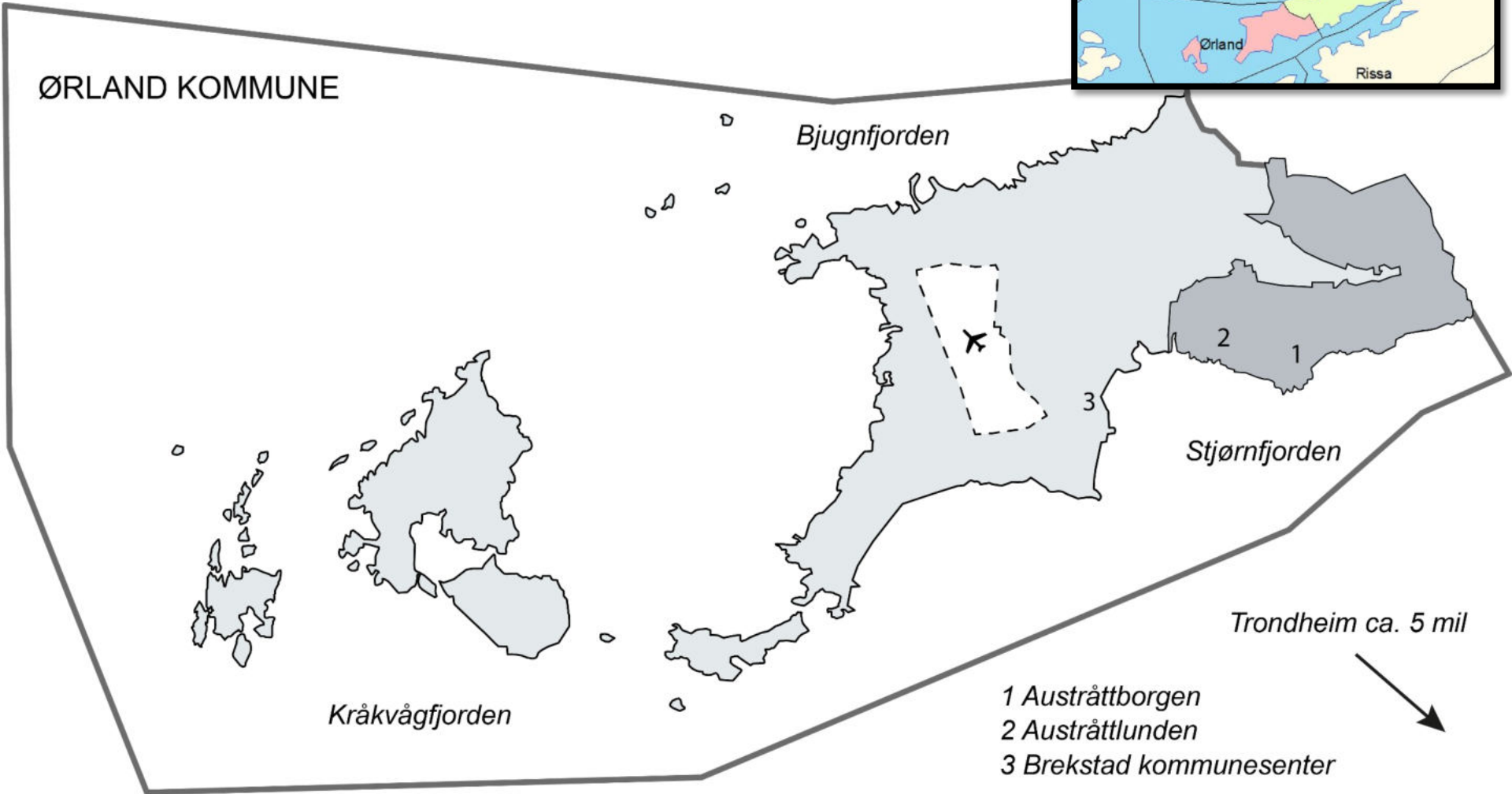
Bjugnfjorden

Stjørnfjorden

Kråkvågfjorden

Trondheim ca. 5 mil

- 1 Austråttborgen
- 2 Austråttlunden
- 3 Brekstad kommunesenter





Austrått, Ørland



International crossroads for birdlife



A landscape shaped by monuments of power and territorial control

The Austrått landscape is the natural recreational area for most people living in the municipality

Ørland-Bjugns boligvekstakse

Botngård

Døstik og Ervik

Opphaug og
Rosløshaugan

Rusasetvatnet og
Rusasetfjellet

Kleivan og
Skankegrenda

Hørregårds-
landskapet
Austrått

Ottersbø

Blue centre marks
recreational areas

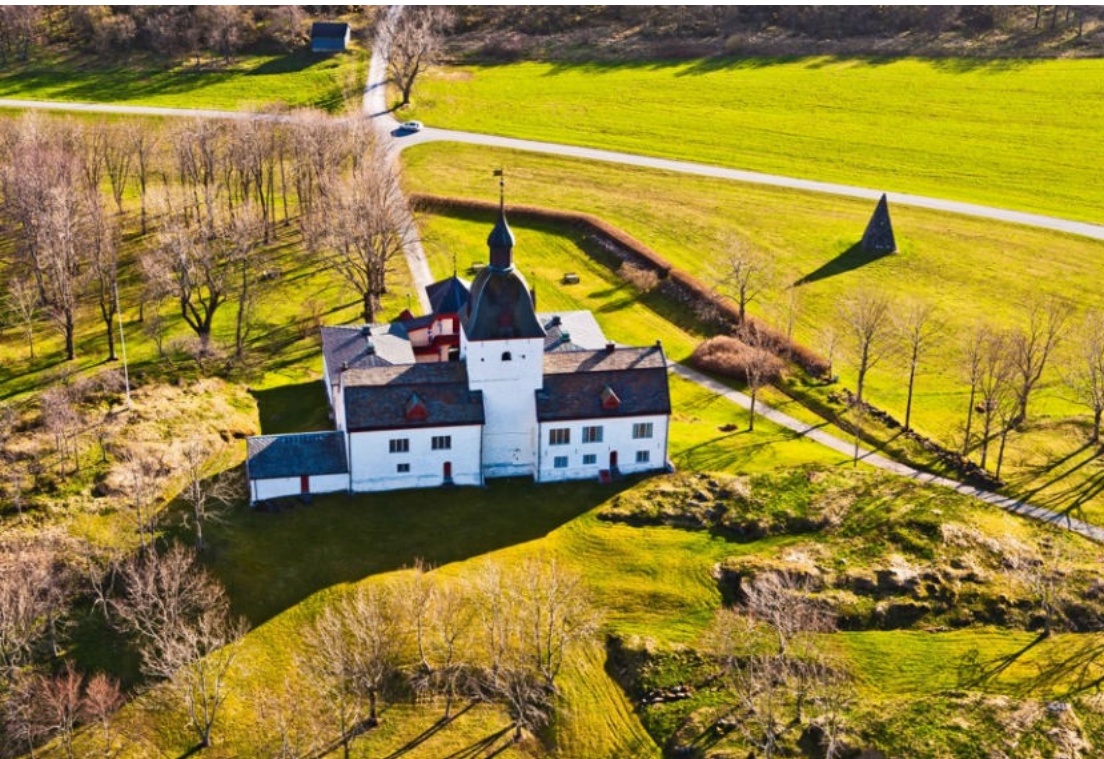
Rød støysone

Brekstad

The two level development plan: Measures in the outskirts and research in the centre



Brief history



The manor and pyramid

- Architecture from 1654-56
Ove Bjelke (1611-74)
- Pyramid from 1665
- Renaissance/Baroque
- Garden and park unknown
- 1720 Abraham Dreyer
- 1736 Søren Dass
- **1760 Hans Holtermann**
- 1863 Gabriel Gravrok
- **1882 Johannes Heftye**
- 1916 Fire
- 1918/19 State takes over
- 1927 and 1961 Restoration work

KART OVER ØSTERAAT

- Manor house**
- East garden**
- West garden**
- Harbour with main approach**
- Austrått farm**
- Hunting park**

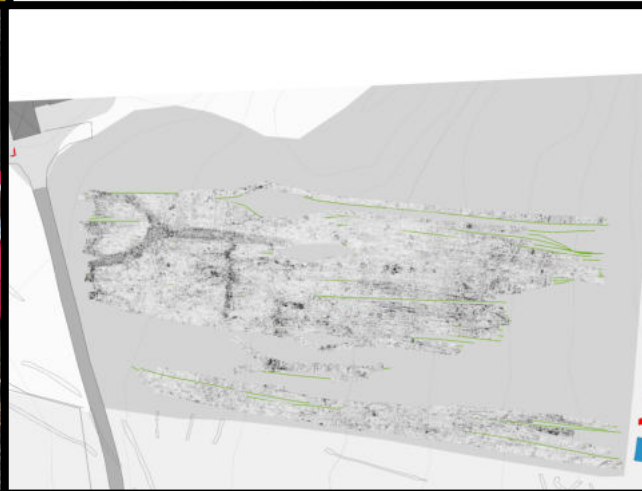
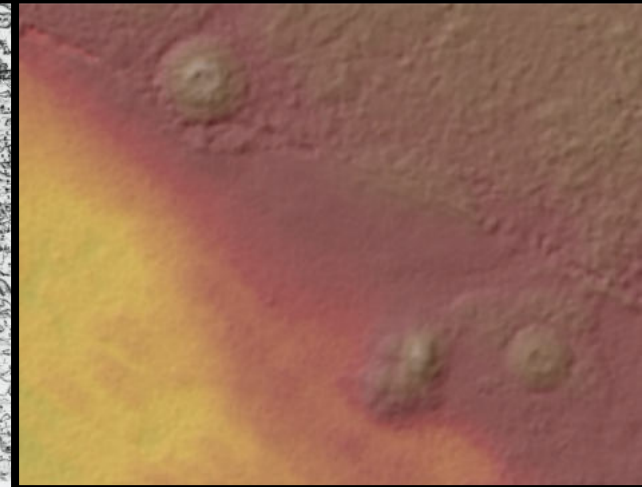
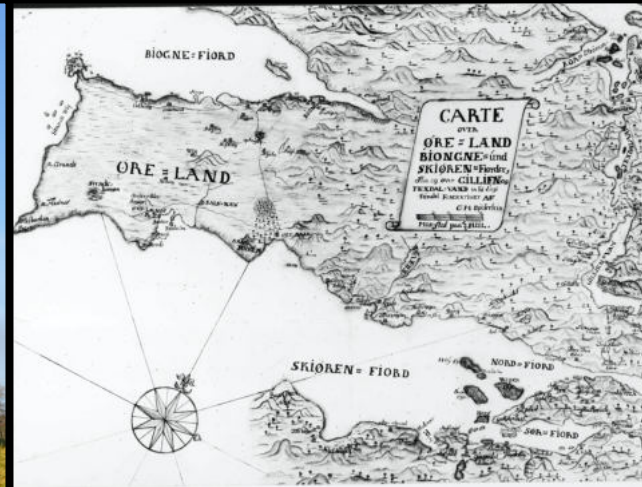
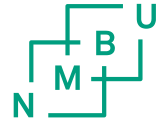
MAALESTOK 1:3125.

SKJÖRN FJORD

Antal	Grundskyldens Måttene naar det Kædet medtagne Tilleg	Placertidstid	Antal	Antal
A. Austrått				
1	1	1	1	1
2	2	2	2	2
3	3	3	3	3
4	4	4	4	4
5	5	5	5	5
6	6	6	6	6
7	7	7	7	7
8	8	8	8	8
9	9	9	9	9
10	10	10	10	10
11	11	11	11	11
12	12	12	12	12
13	13	13	13	13
14	14	14	14	14
15	15	15	15	15
16	16	16	16	16
17	17	17	17	17
18	18	18	18	18
19	19	19	19	19
20	20	20	20	20
21	21	21	21	21
22	22	22	22	22
23	23	23	23	23
24	24	24	24	24
25	25	25	25	25
26	26	26	26	26
27	27	27	27	27
28	28	28	28	28
29	29	29	29	29
30	30	30	30	30
31	31	31	31	31
32	32	32	32	32
33	33	33	33	33
34	34	34	34	34
35	35	35	35	35
36	36	36	36	36
37	37	37	37	37
38	38	38	38	38
39	39	39	39	39
40	40	40	40	40
41	41	41	41	41
42	42	42	42	42
43	43	43	43	43
44	44	44	44	44
45	45	45	45	45
46	46	46	46	46
47	47	47	47	47
48	48	48	48	48
49	49	49	49	49
50	50	50	50	50
51	51	51	51	51
52	52	52	52	52
53	53	53	53	53
54	54	54	54	54
55	55	55	55	55
56	56	56	56	56
57	57	57	57	57
58	58	58	58	58
59	59	59	59	59
60	60	60	60	60
61	61	61	61	61
62	62	62	62	62
63	63	63	63	63
64	64	64	64	64
65	65	65	65	65
66	66	66	66	66
67	67	67	67	67
68	68	68	68	68
69	69	69	69	69
70	70	70	70	70
71	71	71	71	71
72	72	72	72	72
73	73	73	73	73
74	74	74	74	74
75	75	75	75	75
76	76	76	76	76
77	77	77	77	77
78	78	78	78	78
79	79	79	79	79
80	80	80	80	80
81	81	81	81	81
82	82	82	82	82
83	83	83	83	83
84	84	84	84	84
85	85	85	85	85
86	86	86	86	86
87	87	87	87	87
88	88	88	88	88
89	89	89	89	89
90	90	90	90	90
91	91	91	91	91
92	92	92	92	92
93	93	93	93	93
94	94	94	94	94
95	95	95	95	95
96	96	96	96	96
97	97	97	97	97
98	98	98	98	98
99	99	99	99	99
100	100	100	100	100

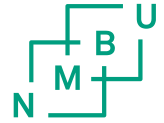
Exploring the heartland of Austrått.

Researching the Austrått landscape

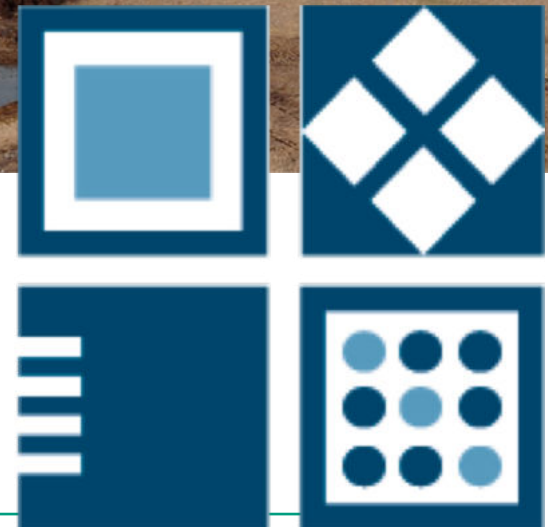


Surveying natural and cultural values. Literature- and archive studies. Lidar/Georadar. Garden archaeology. 10 years work!

Local partner: Ørland cultural centre

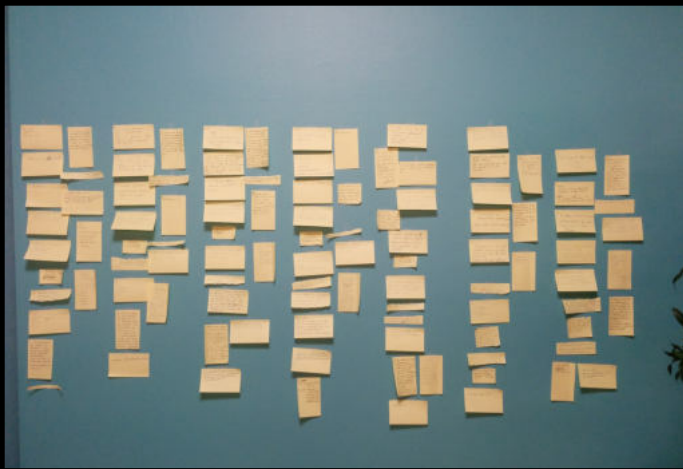
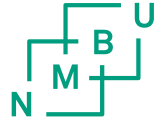


Besøkscenter
Våtmark Ørland



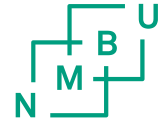
ØRLAND KULTURSENTER

Community involvement



Workshop 2017. Garden archaeology 2018.
Public meetings. Involvement of all generations.

Development of the landscape



Sustainable tourism. Local food production. Restoring parts of historic gardens/landscapes. Traditional food processing. Agriculture and biodiversity. Local involvement.



**The garden and biodiversity program:
Transforming the parklands of Austrått manor.**



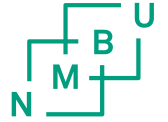
The fruit program: The restored manor East garden as a resource for local fruit production



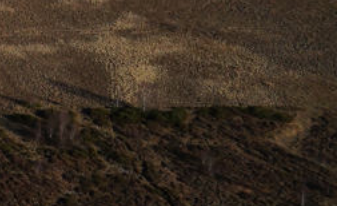
The agricultural program: Farming and biodiversity in the Austrått landscape



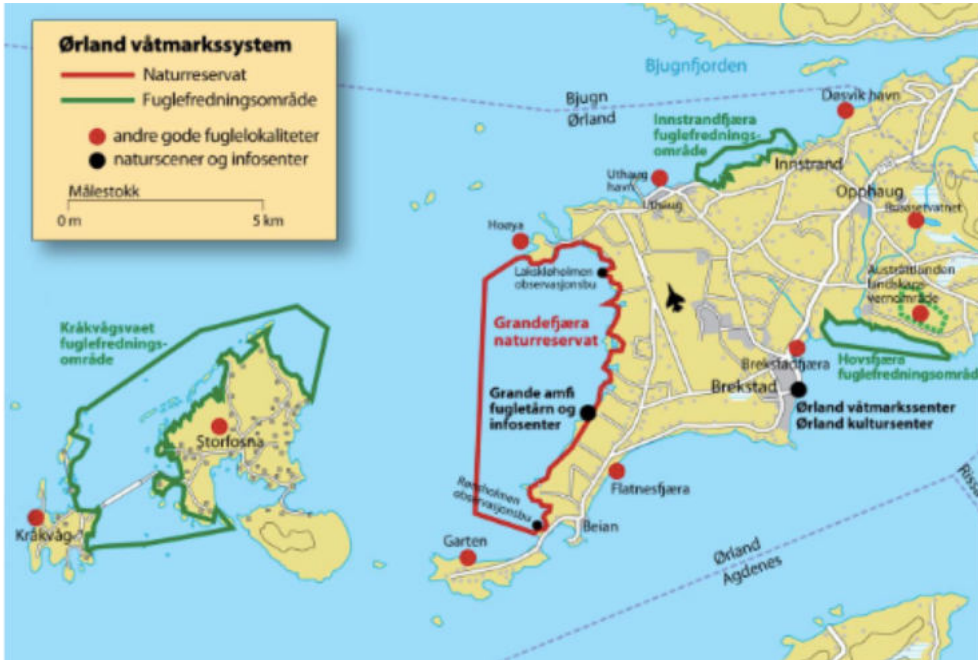
ØRLAND KULTURSENTER



The aim of the program is to work with farmers to enhance biodiversity in the farmlands adjacent to the bird reserves in the Austrått landscape



The lake Rusaset in 2008 and 2017

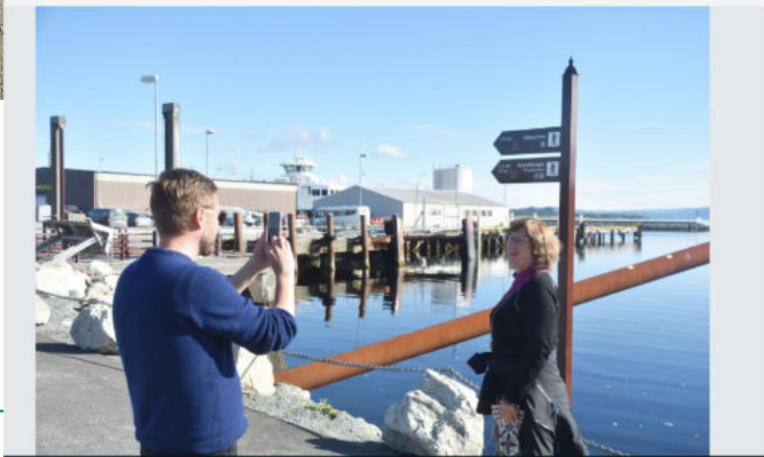


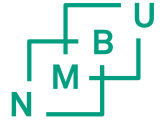
The bird watching program: Ørlands Ramsar areas as a resource for local businesses



Åpnet splitter ny sti med historisk vri

Fredag var det offisiell åpning for kystpilegrimsruta mellom Brekstad og Austrått i Ørland kommune. Det er det gjort betydelige oppgraderinger i løpet av den siste tiden.





How to utilize cultural landscape in tourism

- 1: Create a model for development and management of landscapes especially rich in nature values and cultural heritage. Focus on enhancing these values in the landscape and business models for the private sector with basis in these landscape values.
 - 2: The historical landscape Austrått is thought as the base (as “brand”).
 - 3: Action/development plans for single areas/programs. An overall plan to connect different areas/programs.
 - 4: Present a suggestion for a unit that can work with these tasks.
-

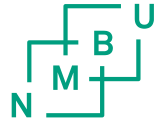
RURITAGE

Heritage for Rural Regeneration



<https://www.ruritage.eu>





Thank you for your attention!

- Contact:
- Dr. Daniel Johansen
d.johansen.post@gmail.com
- Prof. Dr. Annegreth Dietze-Schirdewahn
annegreth.dietze@nmbu.no



Norwegian University
of Life Sciences



ØRLAND KULTURSENTER

